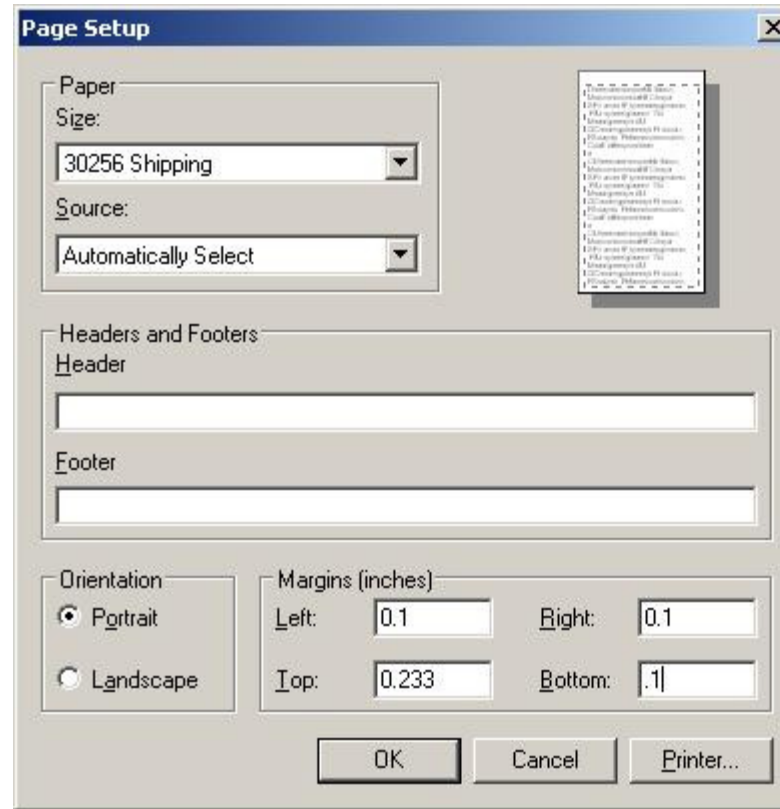
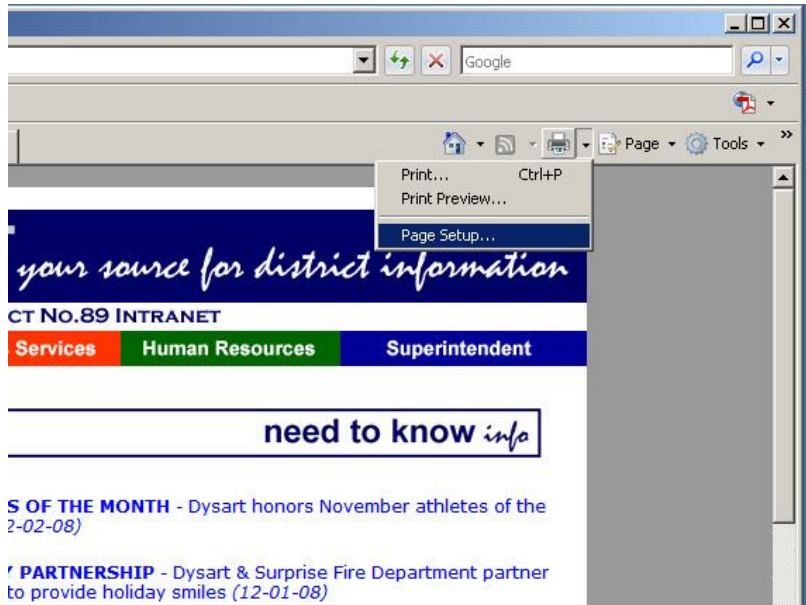


1. **Printers and Faxes**
2. Right click and select **Set as Default Printer**
3. Right click and select **Properties**
4. Click **Printing Preferences**
5. Click **Advanced**
6. Select **30256 Shipping** from the paper size drop down list

Select **Page Setup** inside of Internet Explorer



1. Clear out the Header and Footer fields
2. Change the values of the Margins to 0.1 from 0.75 ( Top will default back to 0.233 as shown)